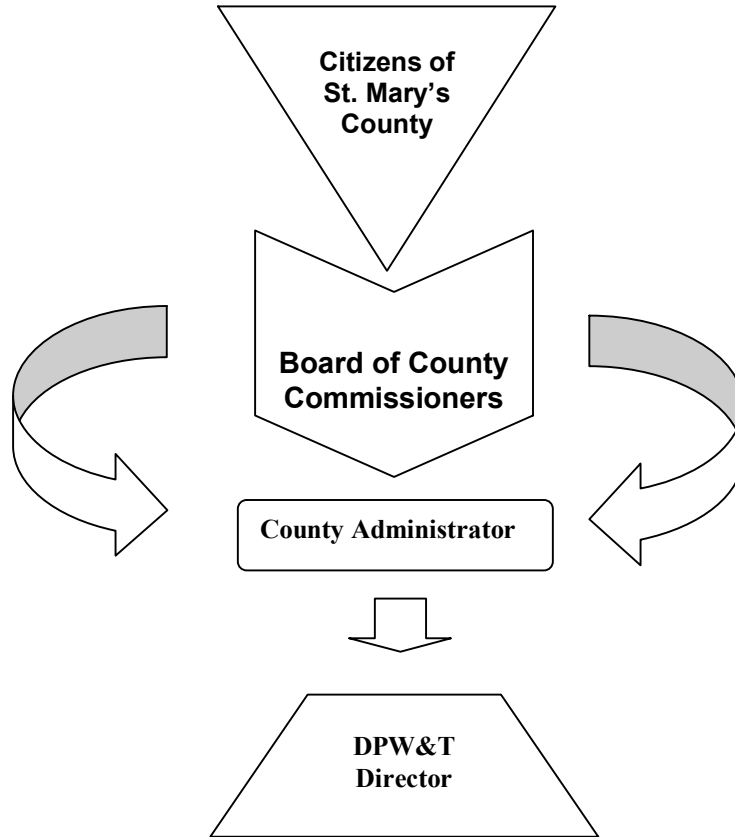


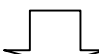
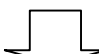

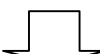


# Organizational Chart



<b>Highways Maintenance</b>	<b>Transportation</b>	<b>Engineering Services</b>	<b>Construction &amp; Inspections</b>	<b>Solid Waste &amp; Recycling</b>	<b>Building / Facilities Management</b>
-----------------------------	-----------------------	-----------------------------	---------------------------------------	------------------------------------	---

- |   |   |  |  |  |  |
|---|---|--|--|--|--|
| <br>Road Maintenance<br>Snow / Ice Removal<br>Drainage Response<br>Traffic Signage<br>Mowing / Trimming<br>Obstruction Removal<br>Inventory and Supply | <br>Vehicle Maintenance<br>Fleet management<br>Equipment Replacement<br>STS Transit System<br>Metro Mail Service<br>Non-Public Schools<br>Grant Administration | <br>Engineering Services<br>Development Review<br>Land Development<br>CIP Planning<br>Project Management<br>Traffic and SWM<br>Capital Projects | <br>Capital Construction<br>Inspection Services<br>Materials Testing<br>Contract Management<br>Pavement Evaluation<br>Facilities Support<br>Quality Control | <br>Solid Waste Planning<br>Recycling Programs<br>Convenience Centers<br>Landfill Operations<br>Permit Compliance<br>Environmental Monitoring<br>Public Education | <br>Facilities Management<br>Building Maintenance<br>Energy Conservation<br>Public Utilities<br>Custodial Services<br>Elevators/Generators<br>Security and Asset Management |
|---|---|--|--|--|--|

*“SERVING THE COMMUNITY”*  
**Department of Public Works & Transportation**  
*Making a Difference Every Day*